
CASSETTE AIR CONDITIONERS









MODEL LINE-UP

LG Cassette Air Conditioners

Discreet and versatile - LG Cassette Air Conditioners are Ideal for various applications including restaurants, hotels and offices.

CEILING MOUNTED CASSETTE

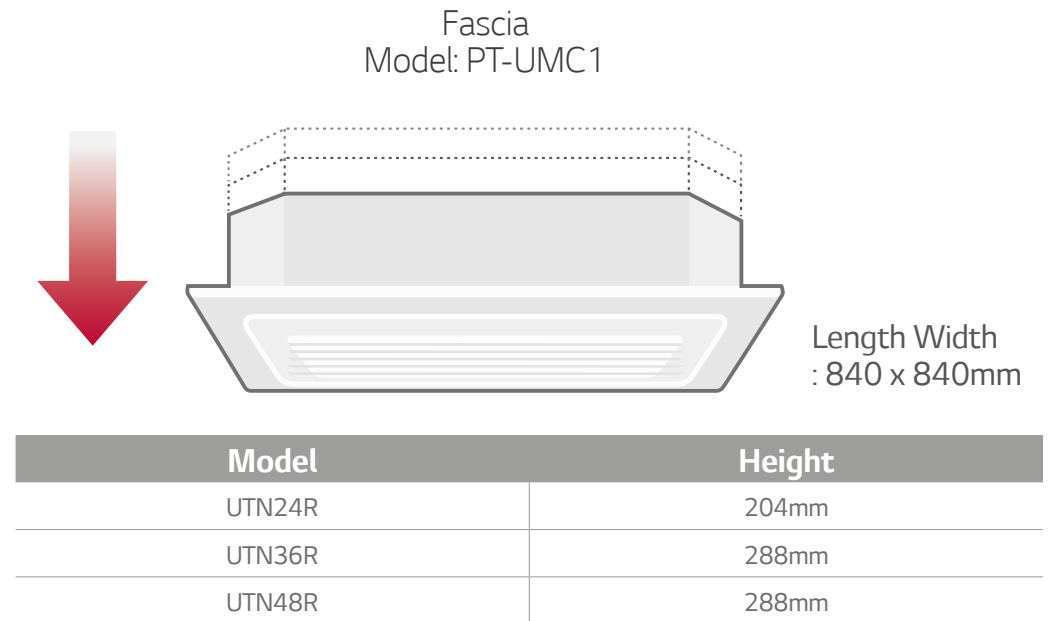
R32

Indoor Unit	Outdoor Unit	Cooling Capacity (kW) Min - Rated - Max	Heating Capacity (kW) Min - Rated - Max
 UTN24R	 UU24WR	2.84 - 6.8 - 7.8	3.2 - 7.5 - 8.8
 UTN36R	 UU36WR	4.5 - 9.5 - 13.0	5.0 - 10.8 - 13.7
 UTN48R	 UU48WR	5.5 - 13.4 - 16.0	6.1 - 15.5 - 18.0

KEY FEATURES

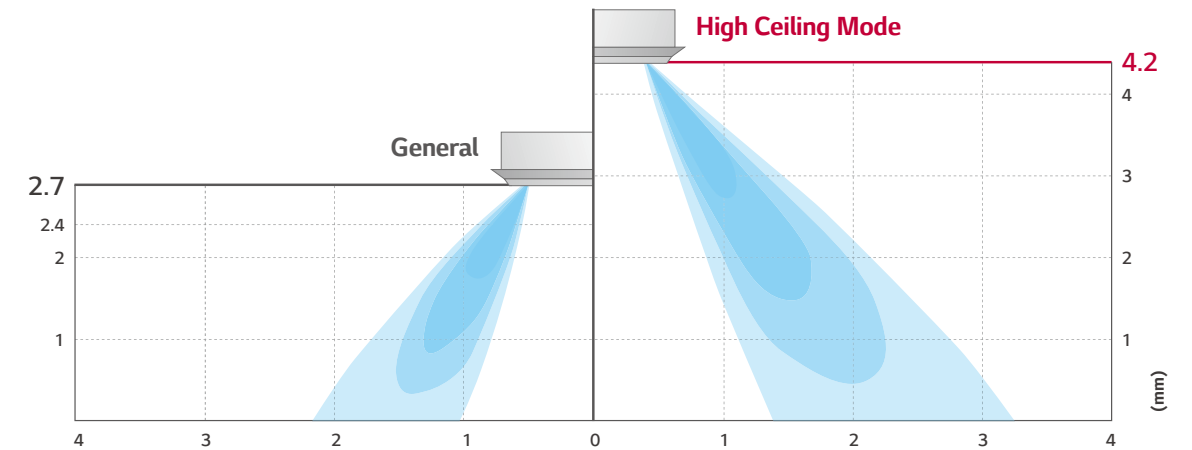
Compact Size

The indoor unit is compact, enabling easier installation in smaller, more restricted spaces.



High Ceiling Mode

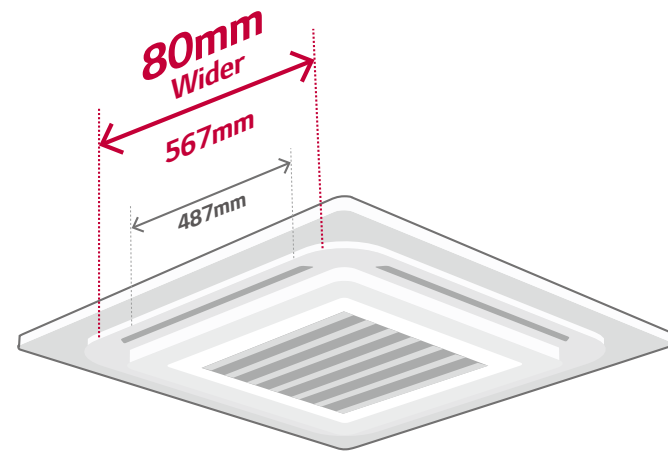
High ceiling mode provides powerful cooling and heating up to 4.2m in height, from ceiling to floor.



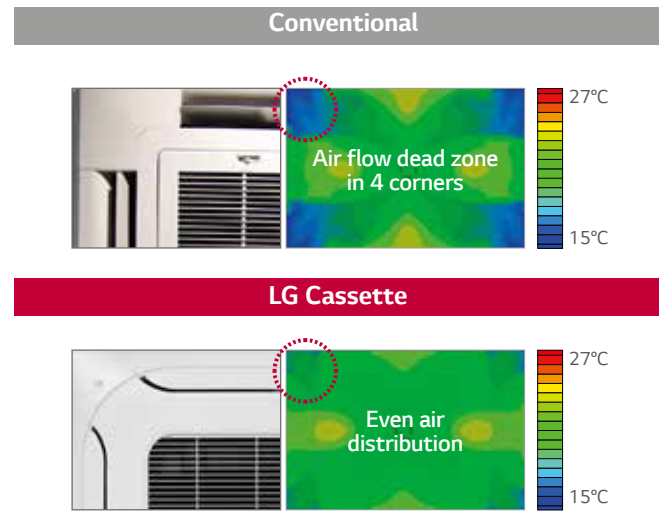
KEY FEATURES

Wide Jet Air Flow

Improved vanes reduce the curved area and provide even air distribution.

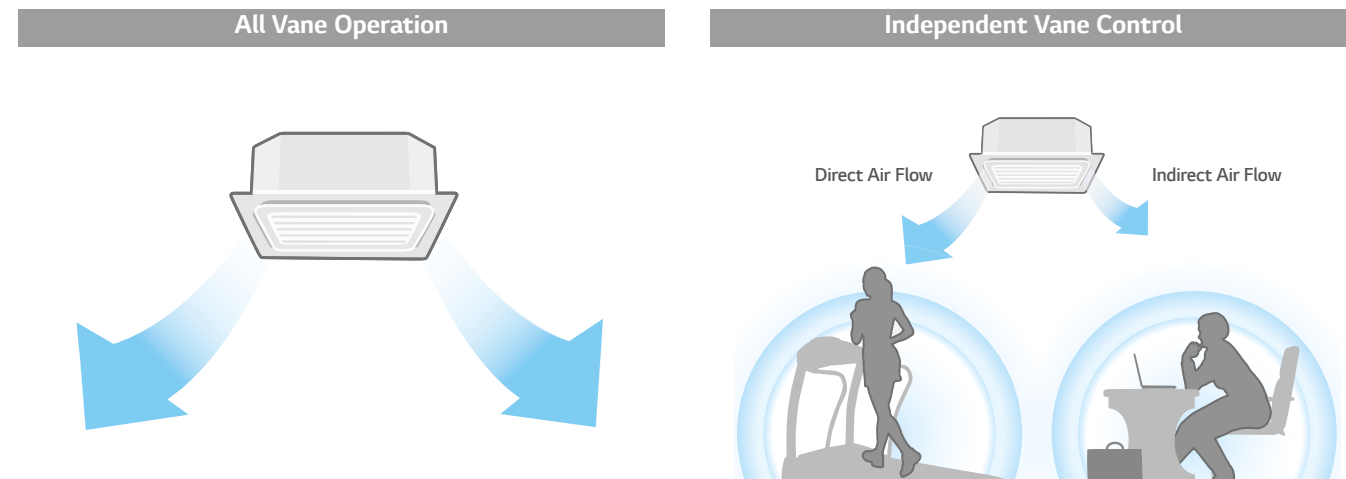


Model: PT-UMC1



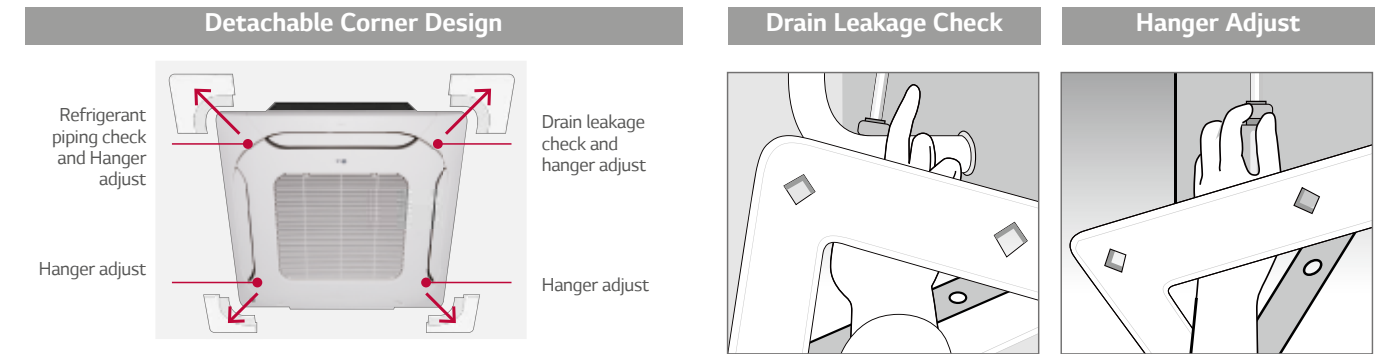
Independent Vane Operation

The independent vane operation feature uses separate motors, making it possible to control all four vanes independently.

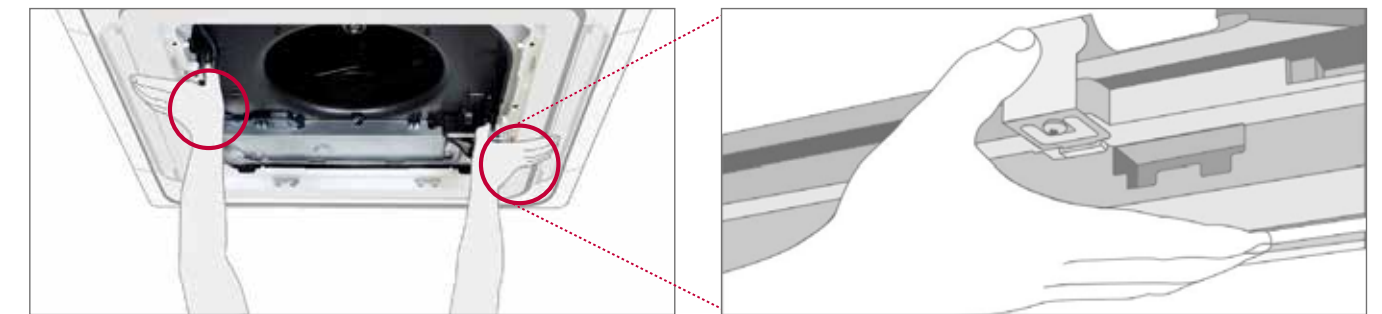


Convenient Panel Installation

The detachable corner design makes it convenient to adjust the hanger during installation and to check for leakages in the drain connection pipe.

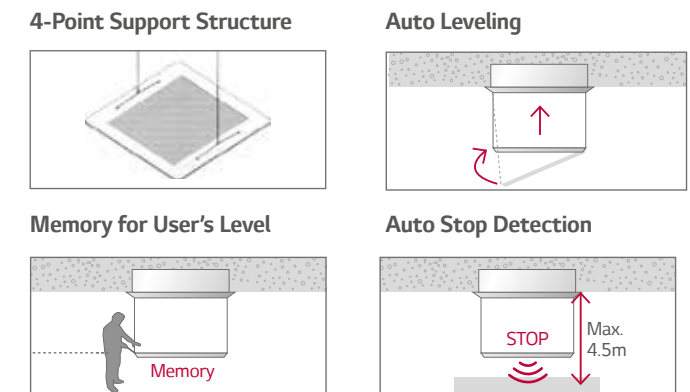


It is easy to attach the panel to the body, using the button type panel design



Auto Elevation Grille

Easy filter cleaning by using the elevation grill.

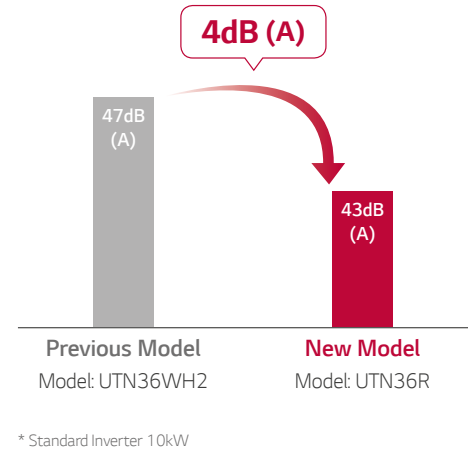
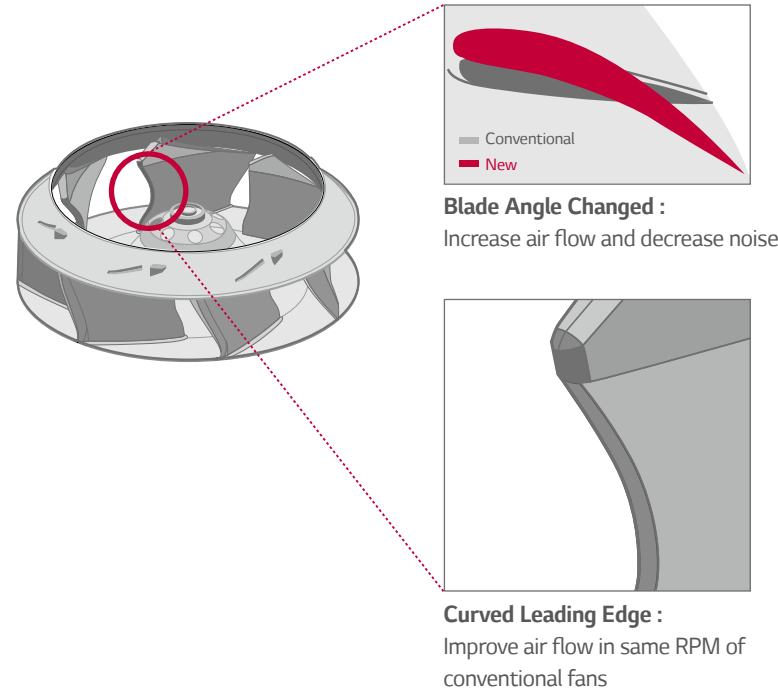


* Operating with wired remote controller PREMTB100, PREMTB001 and wireless remote controller included in PTEGMO.
 * Except CT09 NR2 / CT12 NR2 / CT18 NQ2
 * Applied to cassette panel PT-UMC1

KEY FEATURES

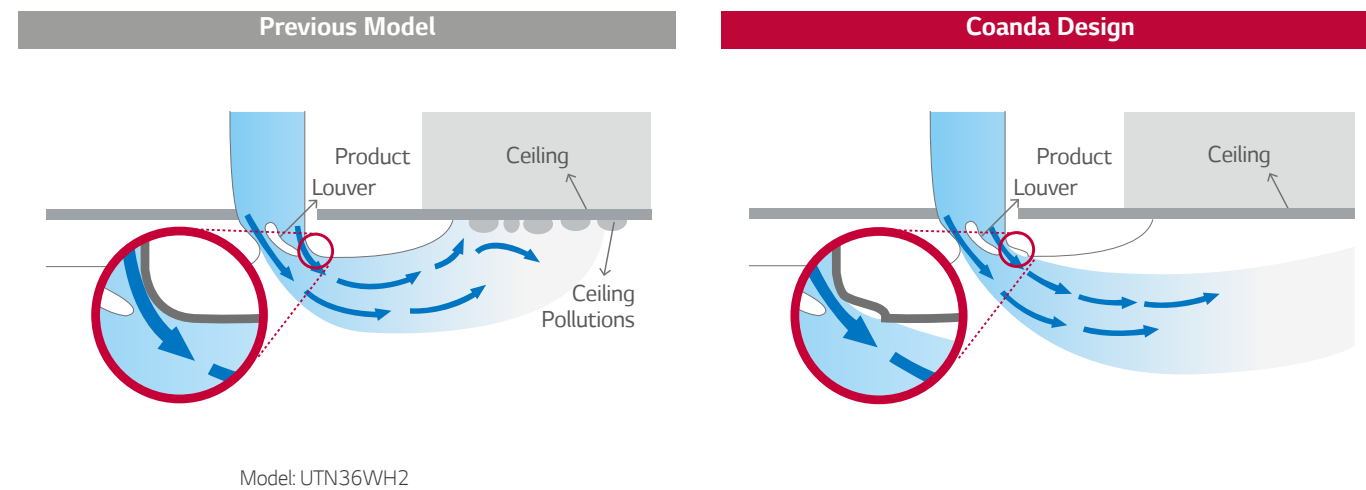
Quiet Operation with 3D Fan

3D fan is applied to H-Inverter cassettes 10 ~ 14kW. It increases air flow but reduces noise.



Prevent Ceiling Pollution

Coanda design of air outlet can help prevent contamination of ceiling.



SPECIFICATIONS

UTN24R / UU24WR
UTN36R / UU36WR
UTN48R / UU48WR



Indoor Unit		Unit		UTN24R	UTN36R	UTN48R
Outdoor Unit		Unit		UU24WR	UU36WR	UU48WR
Rated Capacity	Cooling	kW		6.80	9.50	13.40
	Heating	kW		7.50	10.80	15.50
Capacity Range	Cooling	Min - Max	kW	2.84 - 7.8	4.5 - 13.0	5.5 - 16.0
	Heating	Min - Max	kW	3.2 - 8.3	5.0 - 13.7	6.1 - 18.0
Rated Power Input	Cooling	kW		1.95	2.47	4.27
	Heating	kW		1.88	2.80	4.80
AEER / ACOP	Cooling / Heating	-		3.461 / 3.969	3.769 / 3.788	3.113 / 3.207
EER / COP	Cooling / Heating	-		3.487 / 4.000	3.846 / 3.857	3.138 / 3.229
Rated Current	Cooling / Heating	A		8.60 / 8.80	10.7 / 12.2	18.9 / 21.0
Max. Current (Full Load Amps)	Indoor Unit	A		0.6	1.0	1.0
	Set	A		17	28	28
Air Flow Rate	L/s			283 / 250 / 216	500 / 416 / 333	550 / 466 / 366
External Static Pressure	Pa			-	-	-
Indoor	Sound Level at 1.5m	H / M / L	Pressure dB(A)	38 / 36 / 34	46 / 43 / 40	47 / 44 / 41
	Dimensions	W x H x D	mm	840 x 204 x 840	840 x 288 x 840	840 x 288 x 840
	Weight	kg		20.5	24.6	24.6
Outdoor	Sound Level at 1.5m	Cooling / Heating	Pressure dB(A)	48 / 52	52 / 54	52 / 54
	Sound Power Level	dB(A)		67	66	68
	Dimensions	W x H x D	mm	950 x 834 x 330	950 x 1,380 x 330	950 x 1,380 x 330
	Weight	kg		56.1	87.5	87.5
	Power Supply	V / Phase / Hz			220-240, 1, 50	220-240, 1, 50
Circuit Breaker	A			25	40	40
Compressor Type	-			Twin Rotary	LG Inverter Scroll	LG Inverter Scroll
Refrigerant	Type	-		R32	R32	R32
	Precharged Length	m		7.5	7.5	7.5
Pipe Sizes	Liquid	mm/inch		Ø 9.52 (3/8)	Ø 9.52 (3/8)	Ø 9.52 (3/8)
	Gas	mm/inch		Ø 15.88 (5/8)	Ø 15.88 (5/8)	Ø 15.88 (5/8)
	Drain OD / ID	mm		Ø 32 / 25	Ø 32 / 25	Ø 32 / 25
Max. Pipe Length	m			50	85	85
Max. Height Difference	ODU - IDU	m		30	30	30
Supply Air Opening	H x W, Flange	mm		-	-	-
Return Air Opening	H x W, Flange	mm		-	-	-
Continuous Operating Range	Cooling	°C DB		- 15 - 48	- 15 - 48	- 15 - 48
	Heating	°C WB		- 18 - 18	- 18 - 18	- 18 - 18
Demand Response	-			X	X	X

Note : 1. Due to our policy of innovation some specifications may be changed without notification.
2. Definition of Power Input Nominal conditions - Performance tested under EN14511.
3. Capacities are based on the following conditions:
Cooling : - Indoor Temperature 27°C DB / 19°C WB - Outdoor Temperature 35°C DB / 24°C WB. Heating : - Indoor Temperature 20°C DB / 15°C WB - Outdoor Temperature 7°C DB / 6°C WB.
4. Annual energy consumption : based on average use of 350 running hours in cooling and 1,400 hours in heating per year at seasonal condition.
5. This product contains fluorinated greenhouse gases (R32).
6. Optional Fascia PT-UMC1.

CONTROLLERS & ACCESSORIES



STANDARD CONTROLLER



The standard controller is compact and easy to use.

- 4.3 inch mono display
- Time display
- Room temperature display
- Operation - On/Off
- Fan speed - Low/Med/High/Auto
- Self diagnosis function
- Auto restart on power failure
- Sleep mode
- Child lock
- Filter clean information
- Weekly timer

DELUXE CONTROLLER



The Deluxe Remote Controller is 4.3" with colour design and touch button. The easy to use touch button with backlit LCD displays temperature, humidity, allows you to control the temperature setting and can control up to 8 zones.

- Set up to 8 zones
- 4.3 inch colour display
- Humidity sensor embedded
- Touch button
- Time display
- Room temperature display
- Room humidity display
- Operation - On/Off
- Mode - Auto/Cool/Dry/Heat/Fan
- Occupied cooling and heating temperature setpoints
- Unoccupied cooling and heating temperature setpoints
- Fan speed - Low/Med/High/Auto
- Time limit function
- Auto restart on power failure
- Sleep mode
- Child lock
- Energy monitor
- Filter clean information
- Daily, weekly, yearly and holiday timer

PREMIUM CONTROLLER






The Premium Remote Controller is designed to suit even the most stylish interiors. The easy to use touchscreen panel with backlit LCD allows you to control the temperature with simplicity, and allows you to control up to 8 zones.

- Set up to 8 zones
- 5 inch colour display
- Touch screen
- Time display
- Room temperature display
- Operation - On/Off
- Mode - Auto/Cool/Dry/Heat/Fan
- Occupied cooling and heating temperature setpoints
- Unoccupied cooling and heating temperature setpoints
- Fan speed - Low/Med/High/Auto
- Self diagnosis function
- Auto restart on power failure
- Sleep mode
- Child lock
- Energy monitor
- Filter clean information
- Weekly, yearly and holiday timer

ACCESSORIES

INTERFACE DEVICE

Control Method	Objective/Use	Unit Name and Model	Function	Parts	Features
PI485 PMNFP14A1	To connect Outdoor unit to CNU or Simple Central Controller		<ul style="list-style-type: none"> • RS485 Converter with software • For Max.16 Indoor 	<ul style="list-style-type: none"> • PCB Assembly • Bracket • Lead wire: 3ea • Screw 4EA • Tie wrap • Clamp • Manual 	<ul style="list-style-type: none"> • 1set/1 Outdoor
Dry Contact PDRYCB100	For connect Indoor unit to other Forced on/off Controller		<ul style="list-style-type: none"> • RS485 Converter with software 	<ul style="list-style-type: none"> • PCB Assembly • Top case • Bottom case • Screw • Lead wire 3 • Sub PCB set (1 leadwire + 1 sub PCB) • Manual 	<ul style="list-style-type: none"> • 1set/1 Indoor unit
Dry Contact PDRYCB400	For connect Indoor unit to other Forced on/off Controller		<ul style="list-style-type: none"> • Contact signal to air-con signal converter 	<ul style="list-style-type: none"> • PCB Assembly • Top/Bottom case • Screw • Lead wire 3ea • Sub PCB set (1 leadwire + 1 sub PCB) • Manual 	<ul style="list-style-type: none"> • 1set/1 indoor unit • 2 Contact points • No need AC input • Expected temperature setting is possible

*Dred/Dry contact.

OPTIONAL ACCESSORIES*

Model	Description
PREMTB001	Standard Wired Wall Controller
PREMTB100	Deluxe Wired Wall Controller
PREMTA000	Premium Controller
PWLSSB21H	Wireless Remote Control
PWFMDD200	WiFi Dongle + 1.1m Cable
PWYREW000	10m Cable
PT-UMC1	Cassette Fascia
PTEGMO	Auto Ellevation Grille

*Refer to each model PDB for application accessories.

ACCESSORIES

BUILDING MANAGEMENT DEVICES

Control Method	Objective/Use	Unit Name and Model	Function	Parts	Features
BNU-LW PLNWKB000	To connect PI485 to LONWORKS BMS system		<ul style="list-style-type: none"> • Interface between BMS and LG air-conditioners (LonMark certified : Operation system based on LNS) 	<ul style="list-style-type: none"> • Interface Assembly • 12V DC adaptor • Manual 	<ul style="list-style-type: none"> • 64 indoor units • ACP function (central controller) included
BNU-BAC PQNFB17C 0	To connect PI485 to BACnet BMS system		<ul style="list-style-type: none"> • Interface between BMS and LG air-conditioners (BTL certified : Operation system based on BACnet service) 	<ul style="list-style-type: none"> • Interface Assembly • 12V DC adaptor • Manual 	<ul style="list-style-type: none"> • 256 Indoor units • ACP function (central controller) included • BTL certification (B-ASC)
PDI STANDARD PPWRDB000	To Power consumption Distribution of each indoor unit 2-port		<ul style="list-style-type: none"> • Accumulation of total power consumption • Indication of current power in use • Indication of accumulated power for period • Indication of standby power (option setting) 	<ul style="list-style-type: none"> • PDI Assembly Manual 	<ul style="list-style-type: none"> • 1 PDI / 2 Outdoor
PDI Premium PQNUD1S40	To power consumption distribution of each indoor unit 8-port		<ul style="list-style-type: none"> • Accumulation of total power consumption • Indication of current power in use • Indication of accumulated power for period • Indication of standby power • Blackout protection 	<ul style="list-style-type: none"> • PDI Assembly manual 	<ul style="list-style-type: none"> • 1 PDI / 8 Outdoor

1) PI485 : Product Interface unit for RS 485 transmission



For more information visit
lg.com/au/cassette